

MYArts Venue Packet: Sunrise Theater

A summary of specifications for the Sunrise Theater



* This Venue Packet is intended for guidance purposes only. Availability of any amenities described herein may change. Please contact MYArts Staff with any questions regarding MYArts sunrise Theater to receive up to date information.

LAST REVISED: 7/25

Madison Youth Arts Center Staff	1
Svetlin Borisov	1
Rachel Erikson	1
Jarrod Bainter	1
Basic Information	2
Time Zone	2
Internet	2
Venue Regulations	2
Access & Parking	3
Main Entrance	3
Loading Entrance	3
Parking	3
Backstage	4
Dressing Rooms	4
Stage	4
Stage Dimensions	4
Stage Access	4
Backstage Access	5
Backstage Crossover	5
Stage Construction	5
Drapes	5
Curtains	5
Pipe & Drape	5
Stage Power	5
Audio Power	5
Audio	6
Main Speakers	6
Mixing Console	6
Playback	7
Recording	7
Available Inventory	7
Wireless	7
Assisted Listening	8
Communication	8
Front of House Communications	8
Back of House Communications	8
Lighting	8

Rep Plot	8
Console	8
Remote Operation	9
Circuit Distribution	9
Follow Spots	9
Lighting Inventory	9
House Lights	9
Projection	9
Projector	9
Appendices	10
Appendix A: Backstage Ground Plan	10
Appendix B: Stage Ground Plan	11
Appendix C: Repertory Lighting Plot	12
Appendix D: Dimmer Plot	13
Appendix E: Sunrise Theater Lighting Inventory	14
Appendix F: Riser Setup - Wide Proscenium Style	15
Appendix G: Riser Setup - Narrow Proscenium Style	16
Appendix H: Riser Setup - Thrust Style	17
Appendix I: Riser Setup - Alley Style	18



Ensuring opportunities for young people to express themselves, discover the arts, and create connections, and serving as the home for Children's Theater of Madison and Madison Youth Choirs.

Madison Youth Arts Center Staff

Svetlin Borisov

Executive Director

(608) 949-6495

svetlinb@madisonyoutharts.org

Rachel Erikson

Operations Specialist

(608) 949-6495

rachele@madisonyoutharts.org

Jarrold Bainter

Technical Operations Manager

608-949-6743

jarrodb@madisonyoutharts.org

Venue Address

1055 E Mifflin Street

Madison, WI 53703

(608) 416-1945

Basic Information

Time Zone

Madison, WI is in the Central Standard Time zone (UTC/GMT -6:00).

Stage Style

The Sunrise Theater is a black box style space, and has modular riser platforming for audience seating. Please see Appendices F-I for possible riser configurations

Capacity

The capacity of the Sunrise Theater is dependent on the audience riser setup for the event. The audience seating is modular platforming which can be setup in unique configurations for each event type. typical setup styles vary the seating between 64 and 120 seats. Please refer to Appendix F for the typical seating orientations

Internet

Wireless internet is available. Network: **MYArts Public**. No password is required to use this network.

Venue Regulations

Audio: Madison Youth Arts Center has a restriction of 95dB for audio levels in all of our spaces. If you wish to exceed this limit, MYArts requires that the entity or person(s) hosting the event provide hearing protection and the posting of signage which informs patrons of the elevated volume and where they can secure the hearing protection.

Curfew: MYArts requests all persons (patrons, stagehands, and performers alike) evacuate the building by 11:00pm. If you wish to occupy Madison Youth Arts Center later than this, you must request and receive approval, in writing, from a member of MYArts Staff.

Scheduling: Madison Youth Art Center is a non-union venue and therefore does not require mandatory breaks or “dark” times, except when state law requires. However, MYArts considers 8 hrs of work a full day. If more time is required for a

staff member to be in site in a 24hr period, special accommodations must be requested from, and approved by MYArts staff in writing.

Technical Equipment: Madison Youth Arts Center requires all equipment owned by MYArts to be restored to the condition, position, and function of the item(s) as they were found at the beginning of usage in the space. Failure to do so may result in additional charges.

Staffing: Madison Youth Arts Center provides a minimal staff for events contingent on the size of persons in attendance. Typically, one front desk personnel, one front of house personnel, and one technical personnel.

Access & Parking

Main Entrance

The Main/Public Entryway is located at 1055 Mifflin, on the corner of Mifflin St. & Ingersoll St.

Loading Entrance

The loading entrance is located in an alleyway located off Washington St., between Ingersoll St. & Brearly St. The loading entrance is ground level with an available dock lift. To access the Sunrise Theater from the loading entrance, use of stairway B and/or the freight elevator will be required to reach the 4th floor. The freight elevator dimensions are 6ft wide x 10ft long x 8ft high with a load limit of 5,000 lb.

Parking

Street parking is often available. Be advised to look for street cleaning notices and other signs detailing parking restrictions, particularly on Thursday mornings. Additionally, there is a paid parking ramp adjacent to the MYArts building, with the entrance located on Ingersoll St. and a rate of \$2 per hour. Parking ramp has approximately 80 guest spots available.

Backstage

Dressing Rooms

There are 2 dressing rooms,

Dressing Rooms

- 10 people maximum suggested
- Lockable door accessible by numerical keypad
- 2 makeup counters at least 8ft long with mirrors
- 1 sink
- 12+ power outlets for each counter
- Video & Audio Monitoring of the Sunrise and Starlight theaters
- Video/audio monitor capabilities for both The Starlight and Sunrise Theaters

Green Room

The green room is located across the hall from the backstage area, and is not a private space as it is in a hallway with 2 studio spaces adjacent. In this area there is a small kitchenette area with a small fridge and sink. Audio monitoring is available in the green room area. Please find the layout of the backstage area in Appendix A

Stage

*For exact dimensions please find the stage ground plan in Appendix B.

Stage Dimensions

The dimensions of the Sunrise Theatre are approximately 44 ft by 27 ft within the full length curtain track which surrounds the room. The wall to wall Dimensions are 53ft by 36ft.

Stage Access

The stage can be accessed from either side of the house via the left and right lobby entrances, and from the double door backstage entrances on the wall opposite the lobby entrances.

Backstage Access

The backstage is accessible from 1) a hallway adjacent to the left lobby entrance near the green room, 2) the hallway adjacent the right lobby entrance near the public restrooms 3) Via 2 double doorways from the stage on the wall opposite of the lobby entrances.

Backstage Crossover

The backstage is a corridor which connects to adjacent hallways on either side of the black box. Both double-door egresses from the stage empty into this hallway.

Stage Construction

The stage is constructed with tongue & groove plywood over sleepers & stringers, with a masonite surface cover. It is coated in interior flat black latex paint.

Drapes

Curtains

There is a full length curtain track which surrounds the room. On this single track there are 24 curtain panels each measuring 6ft wide and 14 ft – 8in tall. This track is approximately 4ft from the walls of the space.

Pipe & Drape

MYArst has a Pipe & Drape system available for use consisting of 16 black banjo cloth panels 144in high and 48in wide, 9 Tele-upright poles 7ft to 12ft tall, 8 horizontal drape support poles 4ft to 7ft long, and 9 24in x 24in base plates

Stage Power

Audio Power

20 Amp circuits are available in the following locations:

- 2 @ lobby wall
- 1 @ northeast wall
- 1 @ southwest Wall

Standard Power

20 Amp circuits are available in the following locations:

- 6 @ backstage wall
- 2 @ lobby wall
- 5 @ northeast wall
- 5 @ southwest wall

Audio

Main Speakers

The sunrise Theater PA system includes 2 loudspeakers in a Left-Right configuration, with 1 subwoofer. All of which are active speakers.

Main Amplifiers

The PA loudspeakers & subwoofer are individually powered and do not use external amplifiers

Stage Monitor System

The following speakers are available:

- 2 QSC K12.2 powered wedge monitor
- 1 QSC K112 powered subwoofer

Mixing Console

One Yamaha QL1. The console can be operated from the booth location or the IN-HOUSE location. Basic features follow:

- Mix channels: 32 mono, 8 stereo
- Busses: 16 mix, 8 matrix (Input to Matrix supported)
- Local I/O: 16 in, 8 out
- Fader configuration: 16 + 2 Master (Stereo + Mono)
- Port-to-Port Dante Networking:

Playback

The sunrise Theater has the following playback capability:

- Macbook via use of QLab.
- Denon 300z CD, SD, AUX, AM/FM, Bluetooth Player

Recording

The Sunrise Theater has a Tascam SS-R250n for 2 channel recording to an SD card, or USB drive

Available Inventory

The Sunrise Theater has the following audio equipment available with a standard rental. Availability of all items are subject to change.

Item	Brand	Model	Count
Microphone	AKG	C1000S	2
Drum Mic Kit	Audix	DP7	1
Microphone	Electro-Voice	RE20	1
Microphone	Shure	SM58s	3
Microphone	Shure	SM58	3
Microphone	audio-technica	Pro 44	2
Microphone	Sennheiser	MD421	1
Microphone	Shure	SM57	4
Microphone	Countryman	M2HP4FF50B	4
Wireless Mic Pack	Shure	ULXD1-H50	20
Wireless Mic	Shure	Beta 58A - H50	2
Interface	Focusrite	18i20	1
Direct Box	Radial Engineering	PRO DI - Mono	4
Direct Box	Whirlwind	IMP 2	2

Wireless

One wireless system is available with a total of 2 channels. There are 2 rechargeable wireless packs and 2 rechargeable wireless handheld Beta 58A. All wireless items are H50 frequency band (534-598 MHz)

Assisted Listening

The Sunrise Theater offers up to 12 assisted listening devices, each of which offers two 3.5mm ports for connections with standard headphone devices.

Communication

Front of House Communications

Up to 8 walkie-talkies are available for communication to the front desk of the building and ushers in the Theater.

Back of House Communications

The Sunrise Theater has a 4 channel Clear-Com system. which includes 8 wired and 4 wireless transceivers. Intercom panels with ports for each channel are available throughout the venue including the booth, catwalks, house tech position, and various backstage locations.

Lighting

Rep Plot

The Repertory Plot is the standard lighting plot in use for the stage, which offers ample coverage and color options for the stage from the front of house, and top positions. Minor changes and additions can be made to the Rep Plot depending on availability. Please refer to Appendix C for the typical repertory plot. For up to date plot, paperwork, and inventory please contact the Technical Operations Manager.

Console

One ETCnomad Console with EOS programming wing is located in the booth with a 2 monitor display.

Remote Operation

-ETCpad (LAN connection only)

Circuit Distribution

The Sunrise Theatre is equipped with power relay circuits only. However, there are 5 portable ES750 Dimmers which are available to be deployed for use with the portable dimming power circuits in the space. Please refer to the dimmer plot in Appendix D for the location of the relays and portable dimmer power circuits.

Follow Spots

There are no dedicated follow spots in the Sunrise Theater, but there are 2 follow spot yokes to adapt standard ETC Source 4 instruments onto follow spots and can be added with advanced notice. There are no in-house spot operators but some could be provided at an additional cost, pending availability.

Lighting Inventory

Please find the inventory list in Appendix E.

House Lights

The house light can be controlled by the console, the pre-programmed button panels, or a semi-programmable touch screen in the backstage corridor. If the lighting console is on it will lock out all other systems until the console is powered off completely.

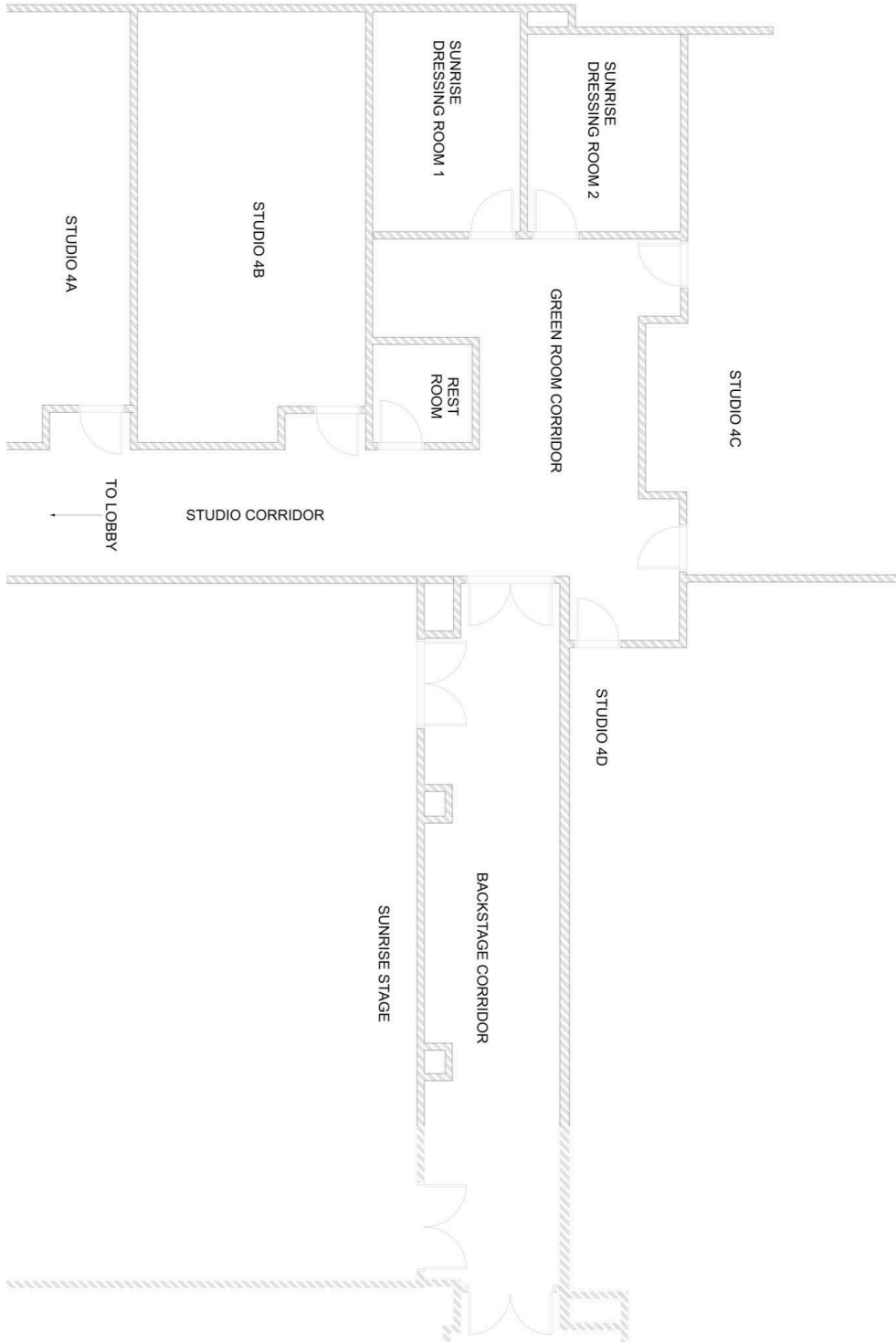
Projection

Projector

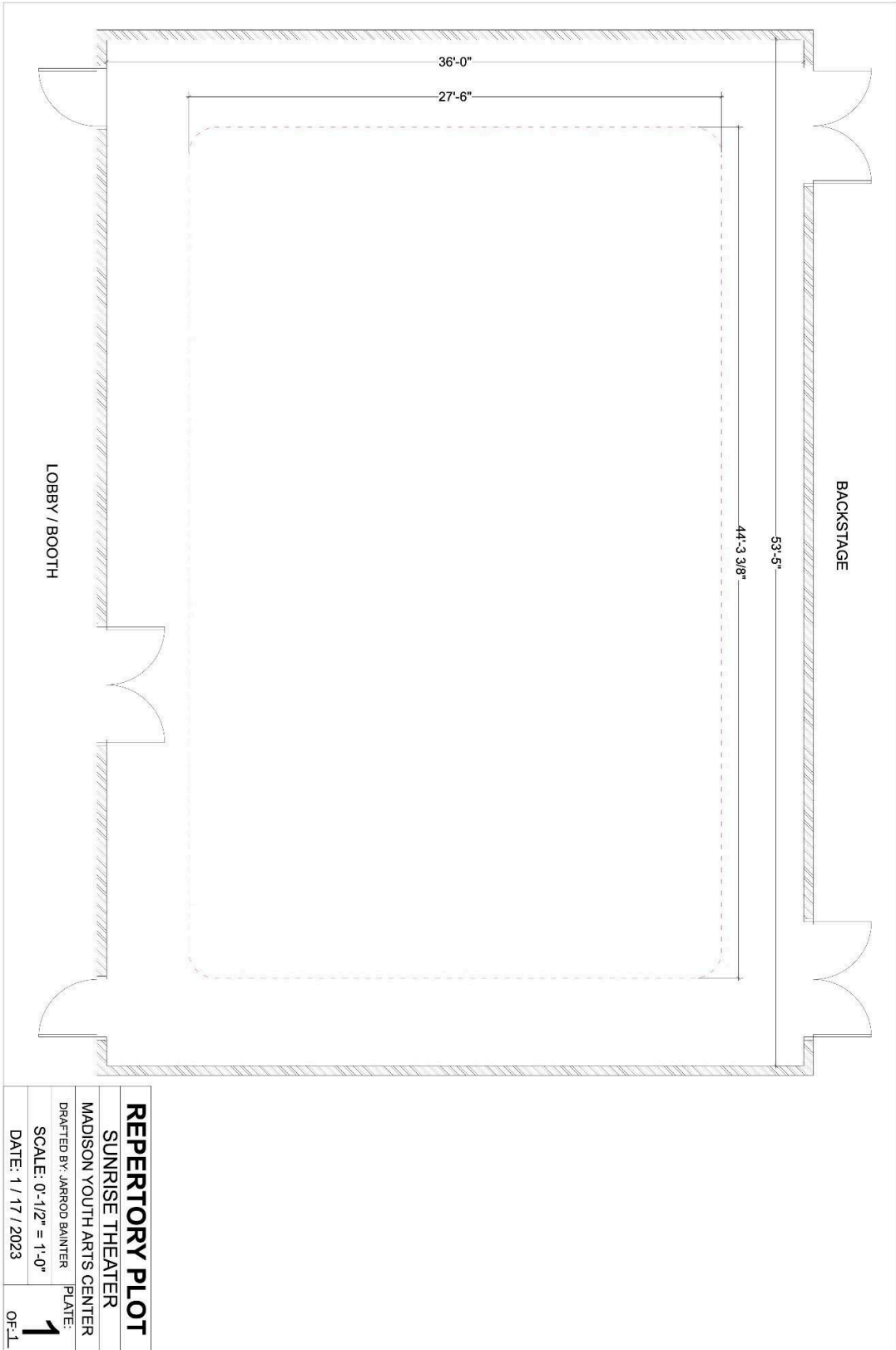
The Sunrise Theater has no projection equipment installed.

Appendices

Appendix A: Backstage Ground Plan

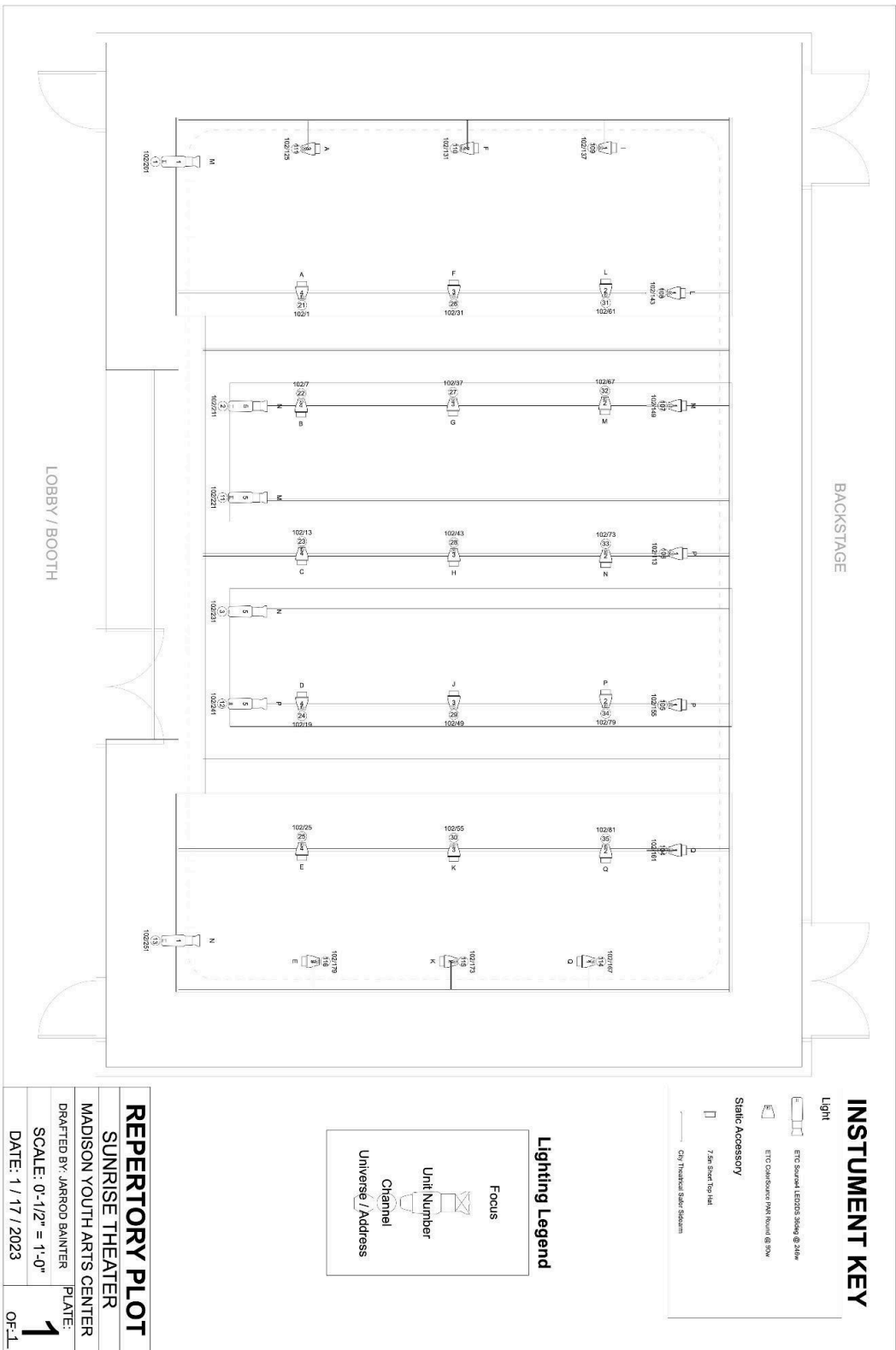


Appendix B: Stage Ground Plan

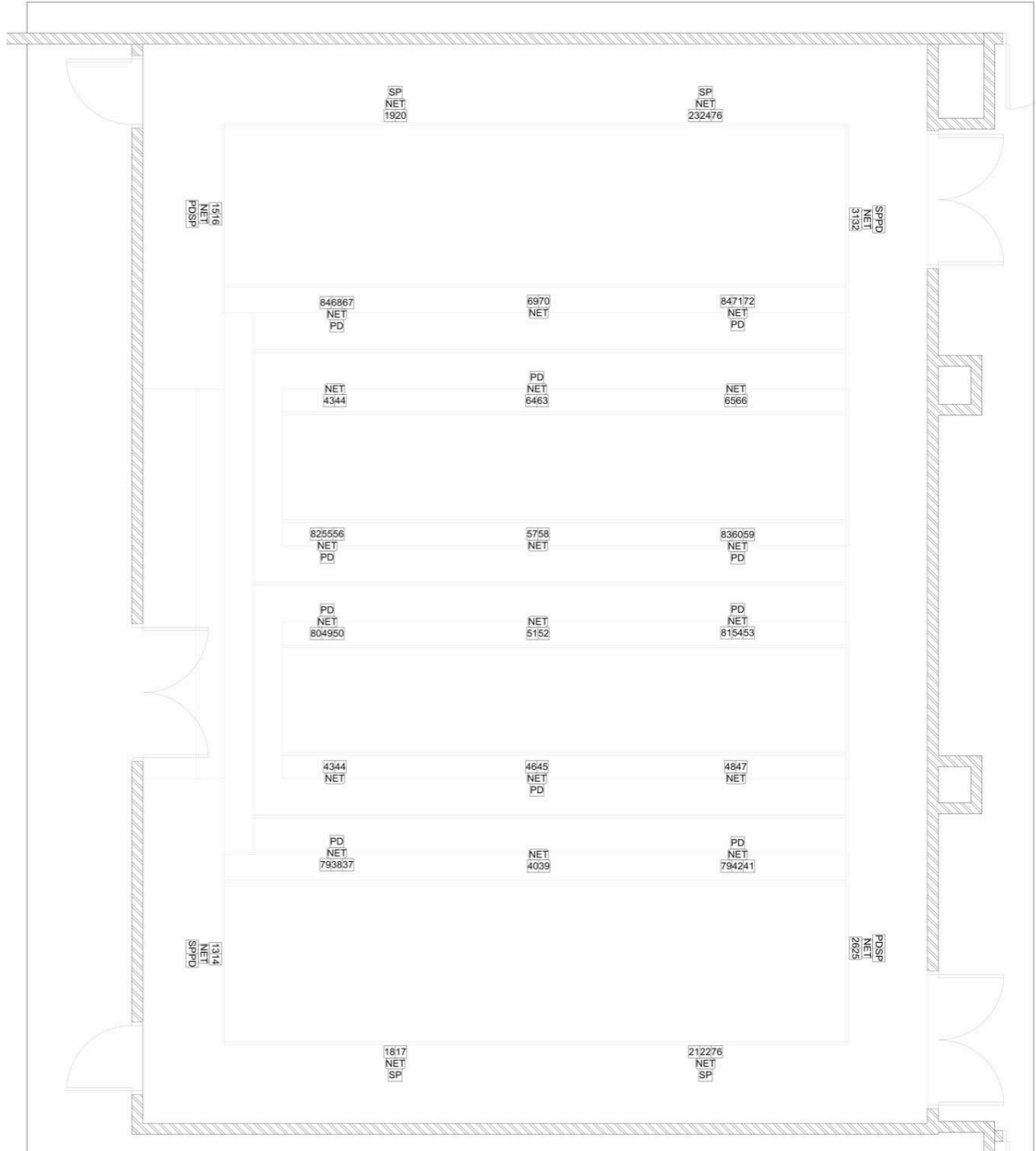


REPERTORY PLOT	
SUNRISE THEATER	
MADISON YOUTH ARTS CENTER	
DRAFTED BY: JARROD BAINIER	PLATE:
SCALE: 0'-1/2" = 1'-0"	1
DATE: 1 / 17 / 2023	OF-1L

Appendix C: Repertory Lighting Plot



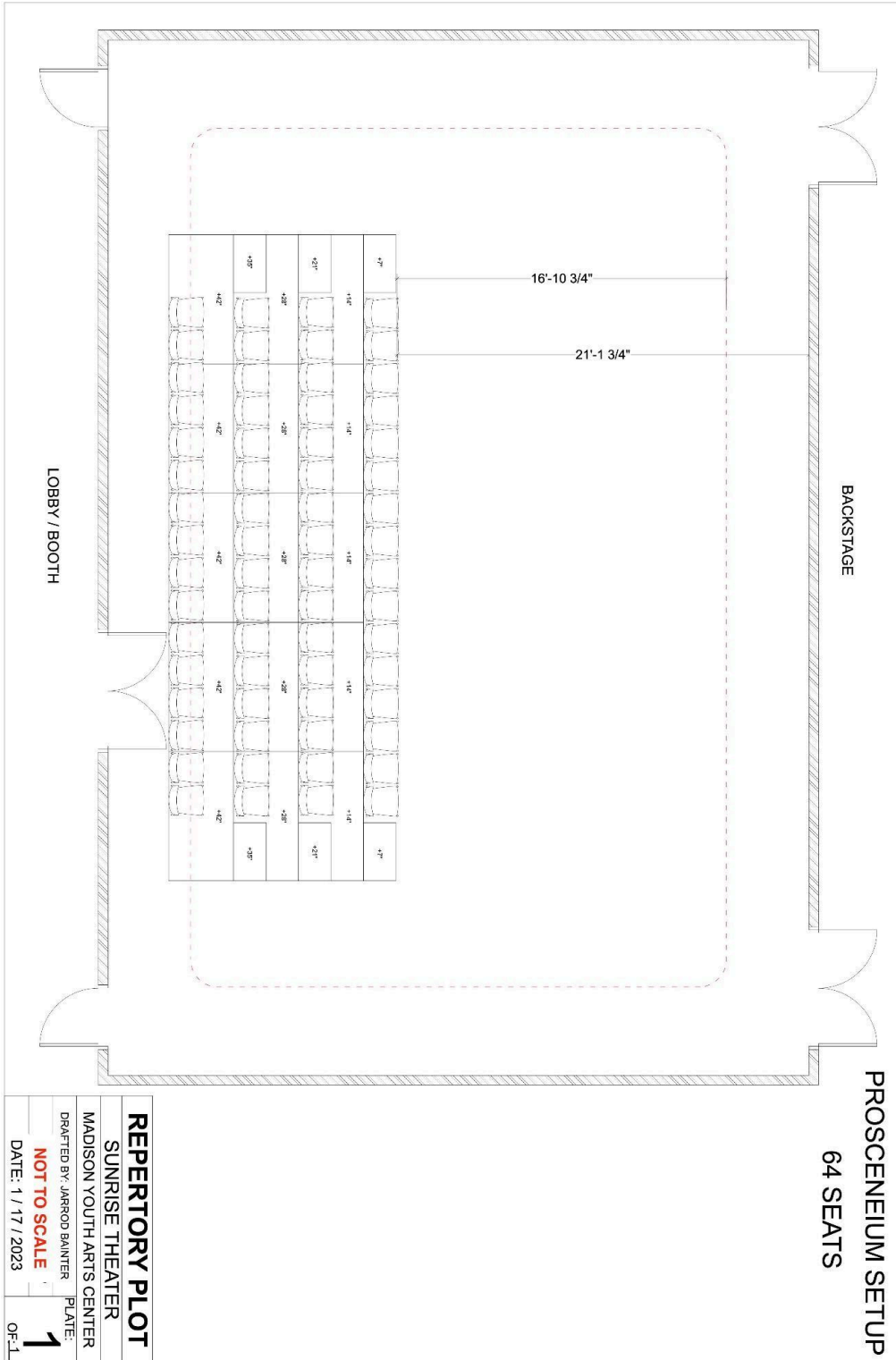
Appendix D: Dimmer Plot



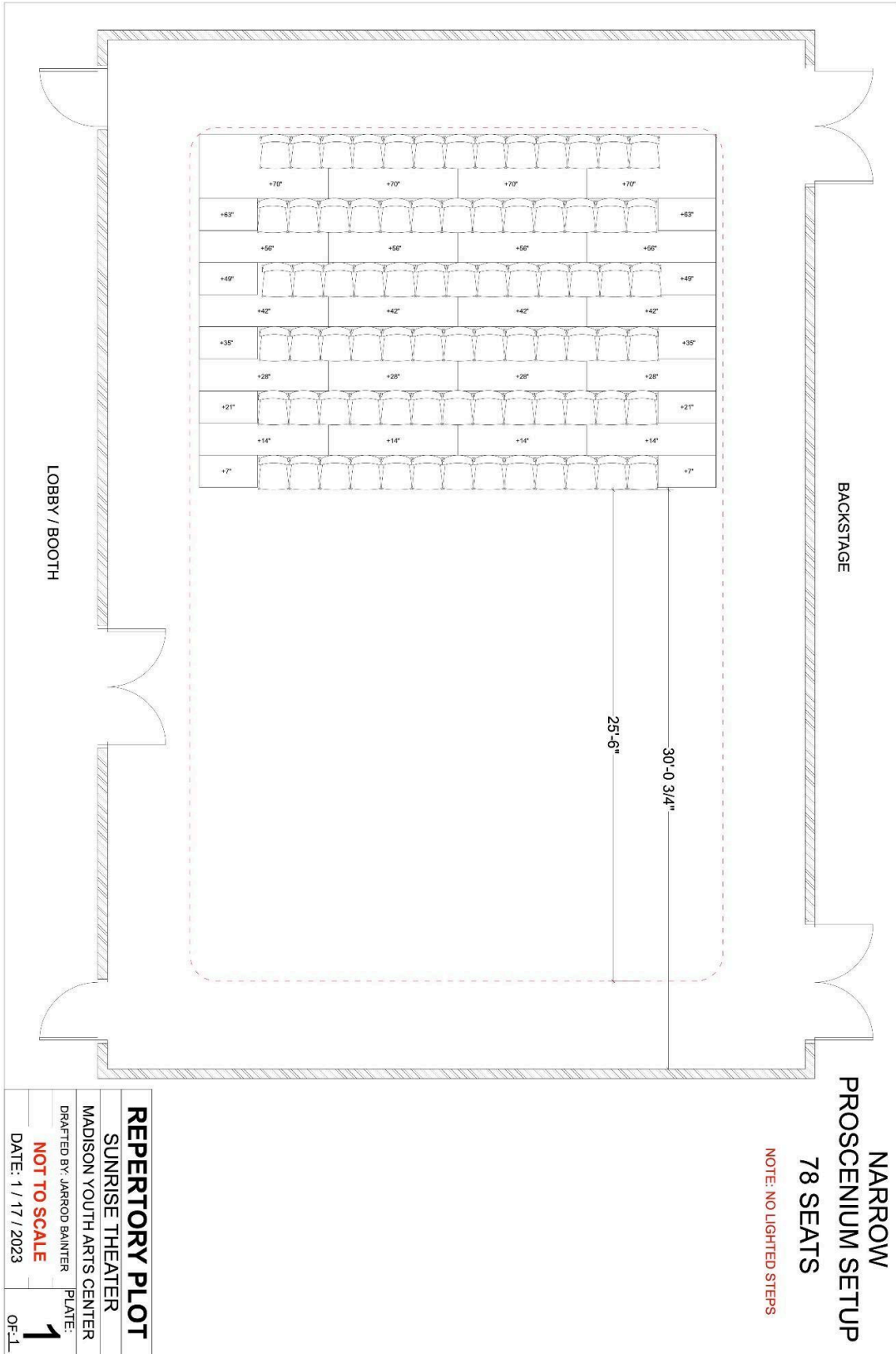
Appendix E: Sunrise Theater Lighting Inventory

INSTRUMENT INVENTORY		
ITEM	SUNRISE PLOT	IN STORAGE
COLORSOURCE SPOT	0	1
COLORSOURCE PAR	26	7
S4 LED LUSTR SERIES 2	6	0
S4 ELLIPSOIDAL BODY	0	13
S4 PAR BODY	0	18
COLORSOURCE CYC	0	0
LENS INVENTORY		
ITEM	SUNRISE PLOT	IN STORAGE
14° ETC SPOT LENS	3	3
19° ETC SPOT LENS	0	3
26° ETC SPOT LENS	0	1
36° ETC SPOT LENS	3	6
50° ETC SPOT LENS	0	3
XWR COLORSOURCE PAR	0	12
WR COLORSOURCE PAR	0	40
MR COLORSOURCE PAR	29	11
NR COLORSOURCE PAR	0	12
WFL S4PAR	14	0
MFL S4PAR	0	32
NSP S4PAR	0	14
VNSP S4PAR	0	14

Appendix F: Riser Setup - Wide Proscenium Style



Appendix G: Riser Setup - Narrow Proscenium Style



**NARROW
PROSCENIUM SETUP
78 SEATS**

NOTE: NO LIGHTED STEPS

REPERTORY PLOT	
SUNRISE THEATER	
MADISON YOUTH ARTS CENTER	
DRAFTED BY: JARROD BAINIER	PLATE: 1
NOT TO SCALE	
DATE: 1 / 17 / 2023	OF: 1

Appendix I: Riser Setup - Alley Style

