

MYArts Venue Packet: Starlight Theater

A summary of specifications for the Starlight Theater



* This Venue Packet is intended for guidance purposes only. Availability of any amenities described herein may change. Please contact MYArts staff with any questions regarding MYArts Starlight Theater and available inventory to receive up to date information.

Table of Contents

Table of Contents	2
Madison Youth Arts Center Staff	1
Svetlin Borisiv	1
Rachel Erikson	1
Jarrod Bainter	1
Venue Address	1
Basic Information	2
Time Zone	2
Internet	2
Venue Regulations	2
Access & Parking	3
Main Entrance	3
Loading Entrance	3
Parking	3
Front of House	3
Lobby	3
Box Office	4
Concessions	4
Other Amenities	4
The Starlight Theater offers stadium style seating with 283 seats available. There are 2 removable sets of three of seats for ADA compliant seating and 4 removable sets of three of seats for FOH tech positions. Please find the full seating chart in Appendix G for details.	4
Backstage	4
Dressing Rooms	4
Green Room	5
Other Amenities	5
Stage	5
Stage Dimensions	5
Stage Access	6
Backstage Access	6
Backstage Crossover	6
Orchestra Room	6
Stage Apron	6
Stage Construction	6
Drapes & Other Goods	7
Retractable Torm	7
Full Stage Backdrops	7

Leg Curtains	7
Border Curtains	7
Tab Curtains	8
Pipe & Drape	8
Fly System	8
Fly System Control	8
Stage Power	8
Audio Power	8
Power Distribution	9
Audio	9
Main Speakers	9
Main Amplifiers	9
Under Balcony Fills	9
Under Balc Amplifiers	9
Surround Sound	9
Surround Sound Amplifiers	9
Front Fills	10
Stage Monitor System	10
Mixing Console	10
Playback	10
Available Inventory	10
Wireless System	11
Wireless Microphones	11
Wireless Microphone Pouches & Belts	12
The Starlight Theater has the following pouches and belts available to use with the in-house wireless system. Availability of all items are subject to change.	12
32" Medium Belt	12
44" Medium Belt	12
52" Medium Belt	12
Assisted Listening	12
Communication	12
Recording	12
Front of House Communications	12
Back of House Communications	12
Lighting	13
Rep Plot	13
Console	13
Remote Operation	13
Circuit Distribution	13

Follow Spots	13
Lighting Inventory	13
Road Power	14
House Lights	14
Video	14
Confidence Display	14
Projector	14
Screens	14
Drop Screen Projection Example	15
Cyclorama Projection Example	15
Appendices	16
Appendix A: Stage Left Wing Ground plan	16
Appendix B: Stage Ground Plan	17
Appendix C: Repertory Lighting Plot	18
Appendix D: Dimmer Plot	19
Appendix E: Starlight Theater Lighting Inventory	20
22Appendix F: Line Set Schedule	21
Appendix G: Starlight Seating Chart	22



Ensuring opportunities for young people to express themselves, discover the arts, and create connections, and serving as the home for Children's Theater of Madison and Madison Youth Choirs.

Madison Youth Arts Center Staff

Svetlin Borisiv

Executive Director

OFFICE: (608) 949-6495

svetlinb@madisonyoutharts.org

Rachel Erikson

Operations Specialist

OFFICE: (608) 949-6495

rachele@madisonyoutharts.org

Jarrold Bainter

Technical Operations Manager

OFFICE: 608-949-6743

jarroldb@madisonyoutharts.org

Venue Address

1055 E Mifflin Street

Madison, WI 53703

(608) 416-1945

Basic Information

Time Zone

Madison, WI is in the Central Standard Time zone (UTC/GMT -6:00).

Stage Style

The Starlight Theater is a proscenium style stage with a portion of the stage, known as the apron, jutting forward into the house.

House Capacity

290 total seats are available for sale, with an additional 4 dedicated seats for ADA compliance.

Internet

Wireless internet is available. Network: **MYArts Public**. No password is required to use this network.

Venue Regulations

Audio: Madison Youth Arts Center has a restriction of 95dB for audio levels in all of our spaces. If you wish to exceed this limit, MYArts requires that the entity or person(s) hosting the event provide hearing protection and the posting of signage which informs patrons of the elevated volume and where they can secure the hearing protection.

Curfew: MYArts requests all persons (patrons, stagehands, and performers alike) evacuate the building by 11:00pm. If you wish to occupy Madison Youth Arts Center later than this, you must request and receive approval, in writing, from a member of MYArts Staff.

Scheduling: Madison Youth Art Center is a non-union venue and therefore does not require mandatory breaks or “dark” times, except when state law requires. However, MYArts considers 8 hrs of work a full day. If more time is required in a 24hr period, special accommodations must be requested from, and approved by, MYArts staff in writing.

Technical Equipment: Madison Youth Arts Center requires all equipment owned by MYArts to be restored to the condition, position, and function of the item(s) as they were found at the beginning of usage in the space.

Staffing: Madison Youth Arts Center provides a minimal staff for events typically consisting of one front desk personnel, one front of house personnel, and one technical personnel. The entity or person(s) hosting the event is responsible for providing a minimum of 4-5 people filling the following roles: front of house lead; back of house lead; one person at the near theater entrance; and 1-2 people inside the theater. If there are other activities (e.g. ticket or concessions sales), additional volunteers are required. MYArts suggests, but does not require, greeters in both the 1st floor lobby and 4th floor lobby.

Access & Parking

Main Entrance

The main/public entryway is located at 1055 Mifflin, on the corner of Mifflin St. & Ingersoll St.

Loading Entrance

The loading entrance is located in an alleyway located off E Washington., between Ingersoll St. & Brearly St. The loading entrance is ground level with an available dock lift. To access the Starlight Theater from the loading entrance, use of stairway B and/or the freight elevator will be required to reach the 4th floor. The freight elevator dimensions are 6ft wide x 10ft long x 8ft high with a load limit of 5,000 lb.

Parking

Street parking is often available. Be advised to look for street cleaning notices and other signs detailing parking restrictions, particularly on Thursday mornings. Additionally, there is a paid parking ramp adjacent to the MYArts building, with the entrance located on Ingersoll St. and a rate of \$2 per hour. Parking ramp has approximately 80 guest spots available.

Front of House

Lobby

The lobby adjacent to The Starlight Theatre is a public/shared space and also serves as the lobby for the Sunrise Theatre. The lobby may have people making

use of the tables in the lobby or passing through as they head to other spaces on the 4th floor.

Box Office

The entity or person(s) hosting the event is solely responsible for managing ticket sales. MYArts can provide a seatmap if they are assigning seats.

Concessions

The Starlight Theatre has a concession area known as Starry Night Concessions. This space also serves as the concession area for The Sunrise Theatre, and may need to be shared if both spaces are in use. MYArts does not have a liquor license. Requests to serve alcohol at events held at MYArts will be considered on a case by case basis, and will take into consideration legal requirements, the nature of the event, and other activities happening in the building at the same time.

Other Amenities

MYArts has folding tables which are 6ft long available for either backstage, or front-of-house use, and has several options for chairs available if needed. table quantities are limited. MYArts does not have table cloths for the folding tables.

Audience Seating

The Starlight Theater offers stadium style seating with 283 seats available. There are 2 removable sets of three of seats for ADA compliant seating and 4 removable sets of three of seats for FOH tech positions. Please find the full seating chart in Appendix G for details.

Backstage

Dressing Rooms

There are 4 dressing rooms and an additional curtained wardrobe area located adjacent to the green room available at stage level.

Dressing Rooms

-10 people maximum suggested

- Lockable door accessible by numerical keypad
- 2 makeup counters at least 8ft long with mirrors
- 1 sink
- 12+ power outlets for each counter
- Audio monitoring

Wardrobe Area

- 4 people maximum
- 4 power outlets

Green Room

The green room is located adjacent to the stage left wing at stage level. There are 2 tables with limited seating, and a kitchenette area which includes fridge, microwave, sink, and dishwasher. Video and audio monitoring are available in the green room. Please find the layout of the backstage area in Appendix A

Other Amenities

There is an additional single stall restroom with shower adjacent to the backstage left area near the freight elevator.

There are laundry units located on the third floor, and are accessible via the freight elevator. MYArts does not provide detergent or fabric softener. arrangements for use of these units must be arranged and agreed to in advance of the event.

MYArts has 2 dressing screens available for quick change purposes. These are made of 3 metal frames with black fabric panels each measuring 34in wide and 71in high, which can unfold to a total width of 102in wide.

The available chair inventory for stage and/or backstage use is 15 black padded Wenger Musician Chairs as well as 8 black plastic Wenger Student Chairs.

There are 15 Wenger Roughneck Music Stands available for use on stage and/or backstage.

Stage

Stage Dimensions

The dimensions listed below are approximated for playing areas determined by the curtains and proscenium line. Please find the stage diagram in Appendix B for details.

Hight: 22ft
Width: 47ft - 9in
Depth: 16ft - 4in (from proscenium line)
Apron: 14ft - 6in (from proscenium line)

Stage Access

The stage can be accessed from either side of the house via vomms on either side, and either the Stage right & Stage left wings.

Backstage Access

The backstage is accessible from two entries 1) a double door entry in the lobby corridor on the far side from the concession area. 2) a double door entry Stage right located near the public restrooms behind the concession area, but is only opened from the stage side.

Backstage Crossover

There is a backstage crossover located upstage of the cyclorama. The walkway is approximately 3ft wide & 65ft long.

Orchestra Room

The Orchestra room is located on the stage left side adjacent the stage left vom from the house and stage. A window 5ft wide x 4.5 ft high allows for line of sight to the stage near the downstage corner of the room.

Stage Apron

The majority of the stage apron is platforming which is removable with advanced notice. The process of removing or installing the apron platforming is approximately 6 hours for 2 stagehands. Requesting the apron to be removed will result in a higher labor cost for your event, and is not guaranteed.

Stage Construction

The stage is constructed with tongue and groove plywood over sleepers and stringers, with a masonite surface cover. It is coated in PPG Break-Through interior/exterior black paint with a satin finish. The stage is not trapable.

Drapes & Other Goods

*For exact dimensions please find the Line Set Schedule in Appendix F. All curtains are dead hung to the grid and do not fly.

Retractable Torm

A Retractable Torm is a feature which is made of solid panels covered in black fabric. The purpose of the torm is to reduce the size of the proscenium opening immediately upstage of the proscenium arch. Each torm panel is 6ft - 6in wide x 30 ft High. They are operated by manual pull individually and are able to travel on stage as much as 6 ft onstage of the proscenium opening, reducing the stage width to as small as 35ft - 9in

Full Stage Backdrops

The depths listed below are from the plaster line, the plane the Proscenium Arch cuts across the stage, unless noted otherwise.

Cyclorama (Cyc): 18ft - 8in depth. Hard panel covered in white fabric and cannot move.

Mid-Stage black: 11ft - 11in depth. Pleated fabric, traveler style operated from the stage left

Main Curtain: 17ft - 6in depth from downstage center apron edge. Blue pleated fabric, traveler style operated from the stage left

Leg Curtains

Leg curtains (legs) are thin vertical black curtains typically used in pairs on opposite sides of the stage to mask the backstage area and occasionally to reduce the width of the on-stage playing area at set intervals upstage of the proscenium opening. the Starlight Theater legs are 10ft wide x 30 ft High. They are operated by manual pull individually and are able to travel on stage as much as 6ft.

Border Curtains

Border curtains (borders) are short wide curtains typically used to mask flown lighting/scenery and occasionally reduce the height of the stage opening. MYArts' borders are 6ft tall x 55ft wide and are pleated. They are flown in via the automated fly system control located stage left. With the borders in, the stage height can be reduced to as small as 16ft tall, with no sightline issues.

Tab Curtains

Tab curtains (tabs) are thin vertical black curtains which run upstage/downstage to completely mask the offstage wings of the stage. Each side of the stage has 2 tabs which are manually pulled. MYArts' tabs are 8ft wide by 30ft tall.

Pipe & Drape

MYArst has a Pipe & Drape system available for use consisting of 16 black banjo cloth panels 144in high and 48in wide, 9 Tele-upright poles 7ft to 12ft tall, 8 horizontal drape support poles 4ft to 7ft long, and 9 24in x 24in base plates

Fly System

*For exact dimensions please find the Line Set Schedule in Appendix F.

Fly System Control

The Starlight Theater operates an automated fly system controlled by an ETC Foundation Desk. The Foundation Desk must be operated by a competent, sober, and trained individual of 18 years of age (or older). The Foundation Desk has the capability to manually control individual battens or multiple battens simultaneously. The Foundation Desk also has programmable memory to store cues for easy adjustments during an event. Please find the lineset schedule in Appendix F for more information.

Stage Power

Audio Power

20 Amp circuits are available in the following locations:

- 2 Upstage Left
- 2 Downstage Left
- 2 Upstage Right
- 2 Downstage Right

Standard Power

20 Amp circuits are available in the following locations:

- 8 Upstage Left
- 8 Offstage Left Wall
- 4 Downstage Left
- 4 Upstage Right
- 4 Offstage Right Wall
- 6 Downstage Right
- 8 Crossover Wall

Power Distribution

One 200 Amp 3-Phase disconnect is located on the stage right wall in the wing.

Audio

Main Speakers

The Starlight Theater PA system includes three D&B 24–45x75 loudspeakers in a Left–Center–Right configuration, with 2 Fulcrum Acoustic CS118 subwoofers. The subwoofers are connected as a single mono send.

Main Amplifiers

The PA loudspeakers & subwoofers are powered by a D&B 30D Amplifier B-Stock.

Under Balcony Fills

The Under Balc Fill system includes 7 Renkus–Heinz CX61s.

Under Balc Amplifiers

The Under Balc Fill system is powered by a QSC CX-Q4k8 amplifier.

Surround Sound

The Starlight Theater has 15 speaker panels in the house for surround sound with no dedicated speakers

Surround Sound Amplifiers

The surround sound system is powered by 2 QSC CX-Q4k8 amplifiers.

Front Fills

The front fill sends are in a left-center-right configuration and are deployable from the tech panels found at the stage edge

Stage Monitor System

The following speakers are available:

- 7 Renkus-Heinz CX61
- 4 EAW VFM109i wedge monitor

Mixing Console

One Yamaha QL5. The console can be operated from the booth location or the IN-HOUSE location. Basic features follow:

- Mix channels: 64 mono, 8 stereo.
- Busses: 16 mix, 8 matrix (Input to Matrix supported).
- Local I/O: 32 in, 16 out.
- Fader configuration: 32 + 2 (Master).

Playback

The Starlight Theater has the following playback capability:

- Mac Mini via use of QLab.
- Denon CD/Blu Ray Player.
- Tascam SS-R250n (SD card recorder/player).

Available Inventory

The Starlight Theater has the following audio equipment available with a standard rental. Availability of all items are subject to change.

Item	Brand	Model	Count
Microphone	AKG	C1000S	2
Drum Mic Kit	Audix	DP7	1
Microphone	Electro-Voice	RE20	1
Microphone	Shure	SM58s	3
Microphone	Shure	SM58	3
Microphone	audio-technica	Pro 44	2
Microphone	Sennheiser	MD421	1
Microphone	Shure	SM57	4

Item	Brand	Model	Count
Microphone	AKG	C1000S	2
Drum Mic Kit	Audix	DP7	1
Microphone	Electro-Voice	RE20	1
Microphone	Countryman	M2HP4FF50B	4
Wireless Mic Pack	Shure	ULXD1-H50	20
Wireless Mic	Shure	Beta 58A - H50	2
Interface	Focusrite	18i20	1
Direct Box	Radial Engineering	PRO DI - Mono	4
Direct Box	Whirlwind	IMP 2	2
Direct Box	Radial Engineering	PRO D2 Stereo	2
Audio Interface	Focusrite	Scarlett 18i20	1

Wireless System

One wireless system is available with a total of 20 channels. There are 20 rechargeable wireless transmitter packs and 4 rechargeable wireless handheld Beta 58A. All wireless items are H50 frequency band (534-598 MHz).

Wireless Microphones

The Starlight Theater has the following microphones available to use with the in-house wireless system. Availability of all items are subject to change.

Style	Color	Brand	Model	Count
Earset	Black	Countryman	E6OW6B2AX	1
Earset	Cocoa	Countryman	E6OW6C2AX	3
Earset	Cocoa	Countryman	E6OW6C1SL	1
Earset	Tan	Countryman	E6OW6T2AX	3
Earset	Light Beige	Countryman	E6OW6L2AX	1
Lavalier	Black	Countryman	B3W5FFO5BAX	1
Lavalier	Black	Shure	WL9	21
Lavalier	Coca	Countryman	B3W5FFO5CAX	3
Lavalier	Tan	Countryman	B3W5FFO5TAX	4

Wireless Microphone Pouches & Belts

The Starlight Theater has the following pouches and belts available to use with the in-house wireless system. Availability of all items are subject to change.

Item	Color	Brand	Model	Count
ULXD1 Pouch	Tan	WMB	BP-SH-ULXD-T	20
32" Medium Belt	Tan	WMB	BELT-32-T	13
44" Medium Belt	Tan	WMB	BELT-44-T	5
52" Medium Belt	Tan	WMB	BELT-52-T	2

Assisted Listening

The Starlight Theater offers up to 12 assisted listening devices, each of which offers two 3.5mm ports for connections with standard headphone devices.

Communication

Recording

The Starlight Theater has a Tascam SS-R250n for 2 channel recording to an SD card or USB drive.

Front of House Communications

Up to 8 walkie-talkies are available for communication to the front desk of the building and ushers in the theater.

Back of House Communications

The Starlight Theater has a 4 channel Clear-Com system. which includes 8 wired and 4 wireless transceivers. Intercom panels with ports for each channel are available throughout the venue including the booth, catwalks, house tech position, and various backstage locations.

Lighting

Rep Plot

The Repertory Plot is the standard lighting plot in use for the stage, which offers ample coverage and color options for the stage from the front of house, top, and high-side positions. Some fixed specials are typically available at the Front-of-House and Stage Electric positions. Minor changes and additions can be made to the Rep Plot depending on availability. Please refer to Appendix C for the typical repertory plot. For up to date plot, paperwork, and inventory please contact the Technical Operations Manager.

Console

One Gio@5 Console located in the booth with an additional monitor.

Remote Operation

- ETC Remote Video Interface 3.
- ETCpad.

Circuit Distribution

Each stage electric has a dedicated raceway which has stage pin connector dimmers, twist lock connector power relays, and programmable lighting network gateway ports. Each catwalk has 2 raceways, one on the relative upstage and one on the relative downstage side of the catwalk, which have stage pin connector dimmers, twist lock connector power relays, and lighting network ports. There are also 4 wall pockets at stage level with combinations of stage pin connector dimmers, twist lock connector power relays, and lighting network ports. Please see Appendix D for the Dimmer Plot.

Follow Spots

There are no dedicated follow spots in the Starlight Theater, but there are 2 follow spot yolks to adapt standard ETC Source 4 instruments onto follow spots and can be added with advanced notice. There are no in-house spot operators but some may be provided at an additional cost, pending availability.

Lighting Inventory

Please find the inventory list in Appendix C.

Road Power

There is a 200 Amp distribution switch on the wall in the stage right wing that accommodates pigtail ends.

House Lights

The house light can be controlled by the console and 2 touchscreen panels, one located in the booth and one in the backstage left wing.

Video

Confidence Display

The Starlight has 2 confidence displays positioned above and behind the audience seating for a performer to see from the stage. These screens can display a view of projector feed, a view of the conductor in the orchestra room, or a view feed of the PTZ camera which can focus onto a portion of the stage.

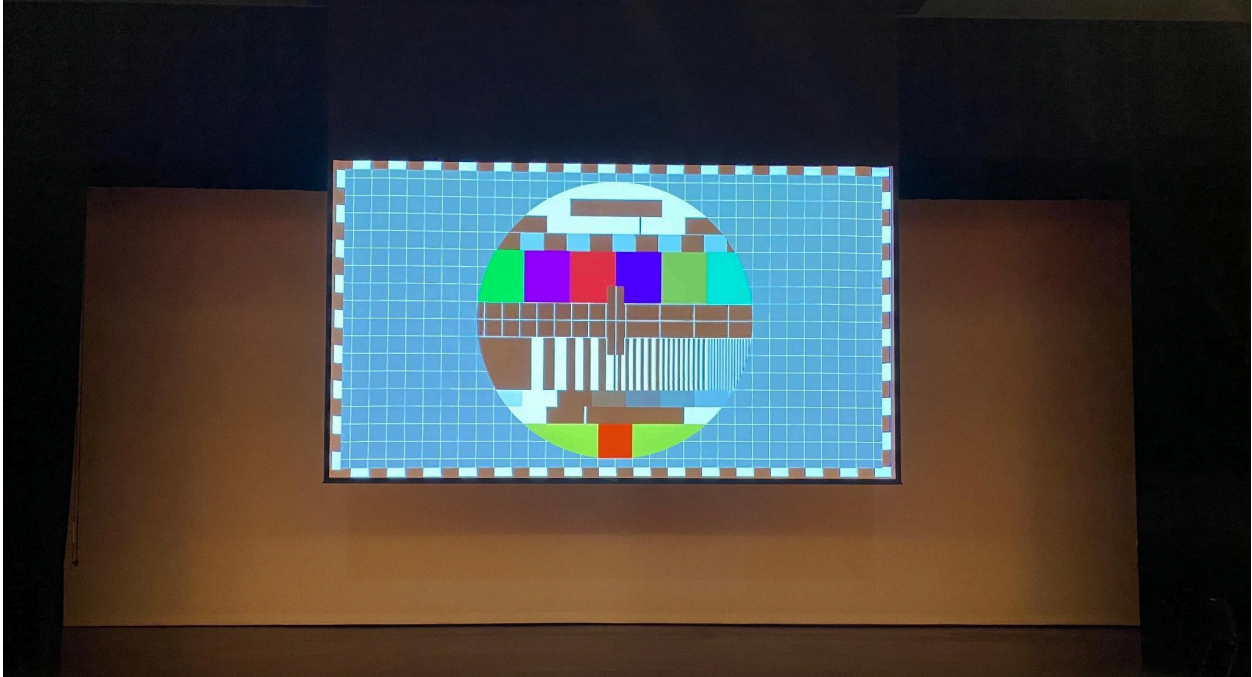
Projector

The Starlight Theater has a Christie D13HD2-HS Laser Projector. The input for the projector can be selected through the projector and also the Crestron system.

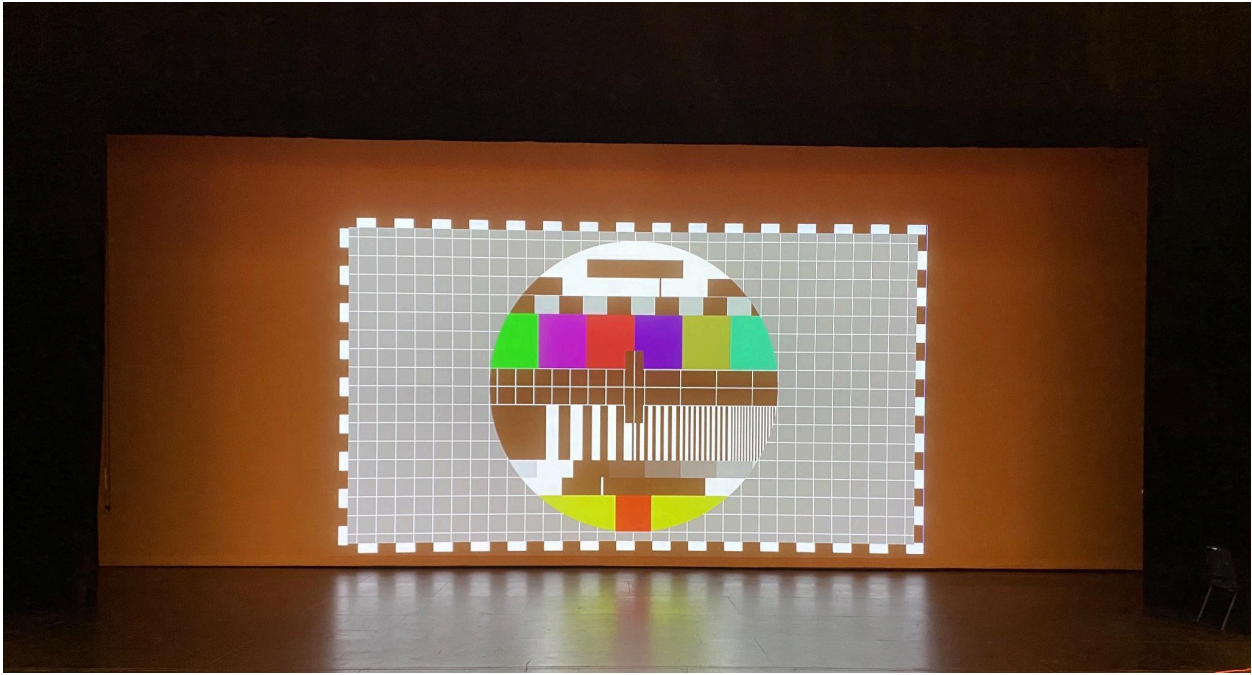
Screens

The Starlight Theater is equipped with a drop down screen that flies in from the proscenium arch. taking approximately 35 seconds to complete the travel distance. Its size is 10ft tall by 18ft wide, and has 6ft - 7in of clearance from the stage to the bottom of the screen when it is lowered. It is alternatively possible to project directly onto the cyc, but the projection area is approximately 16ft tall by 28ft wide at that distance which means the surface of the cyc will not be completely filled with the projection.

Drop Screen Projection Example

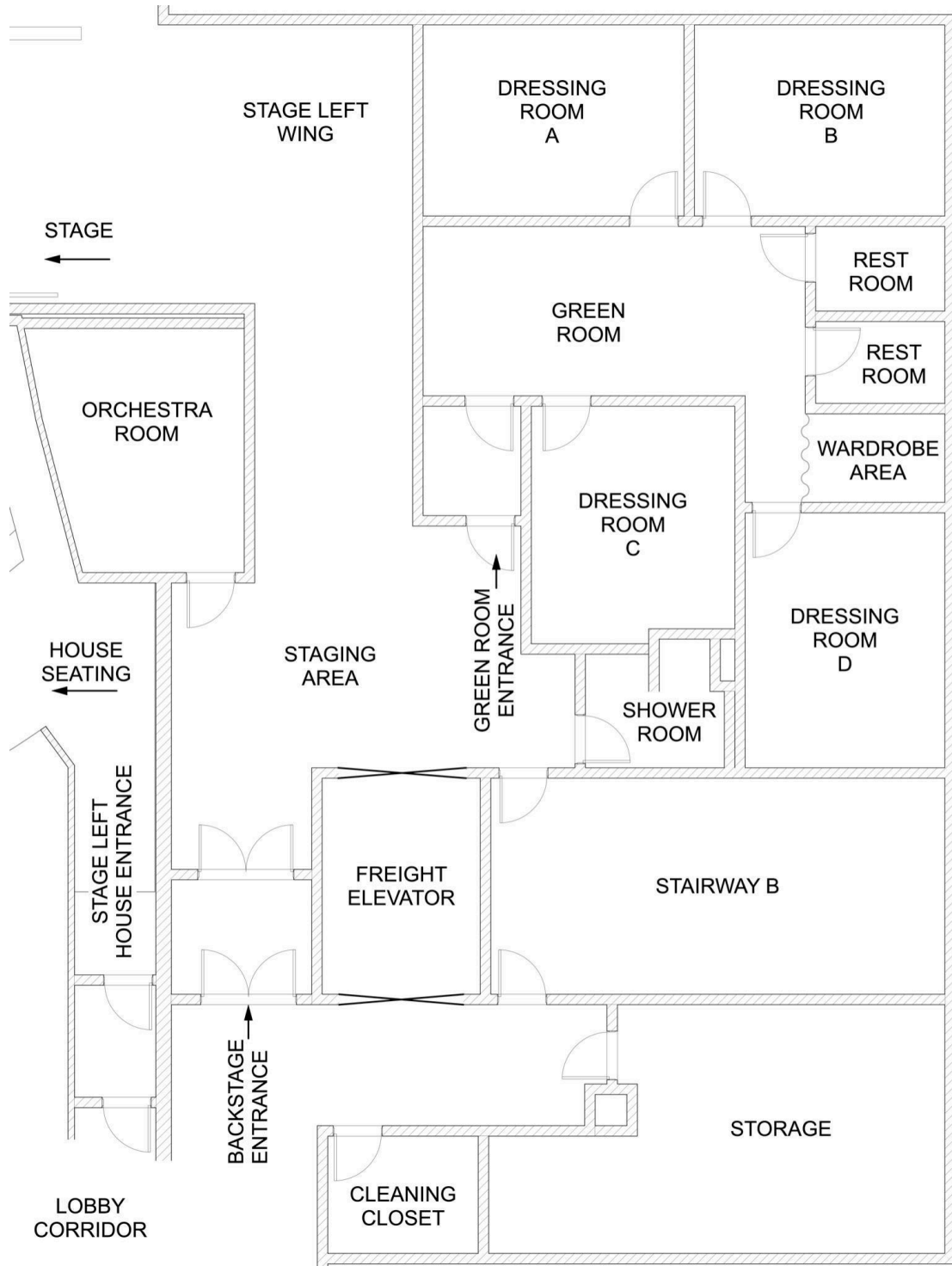


Cyclorama Projection Example

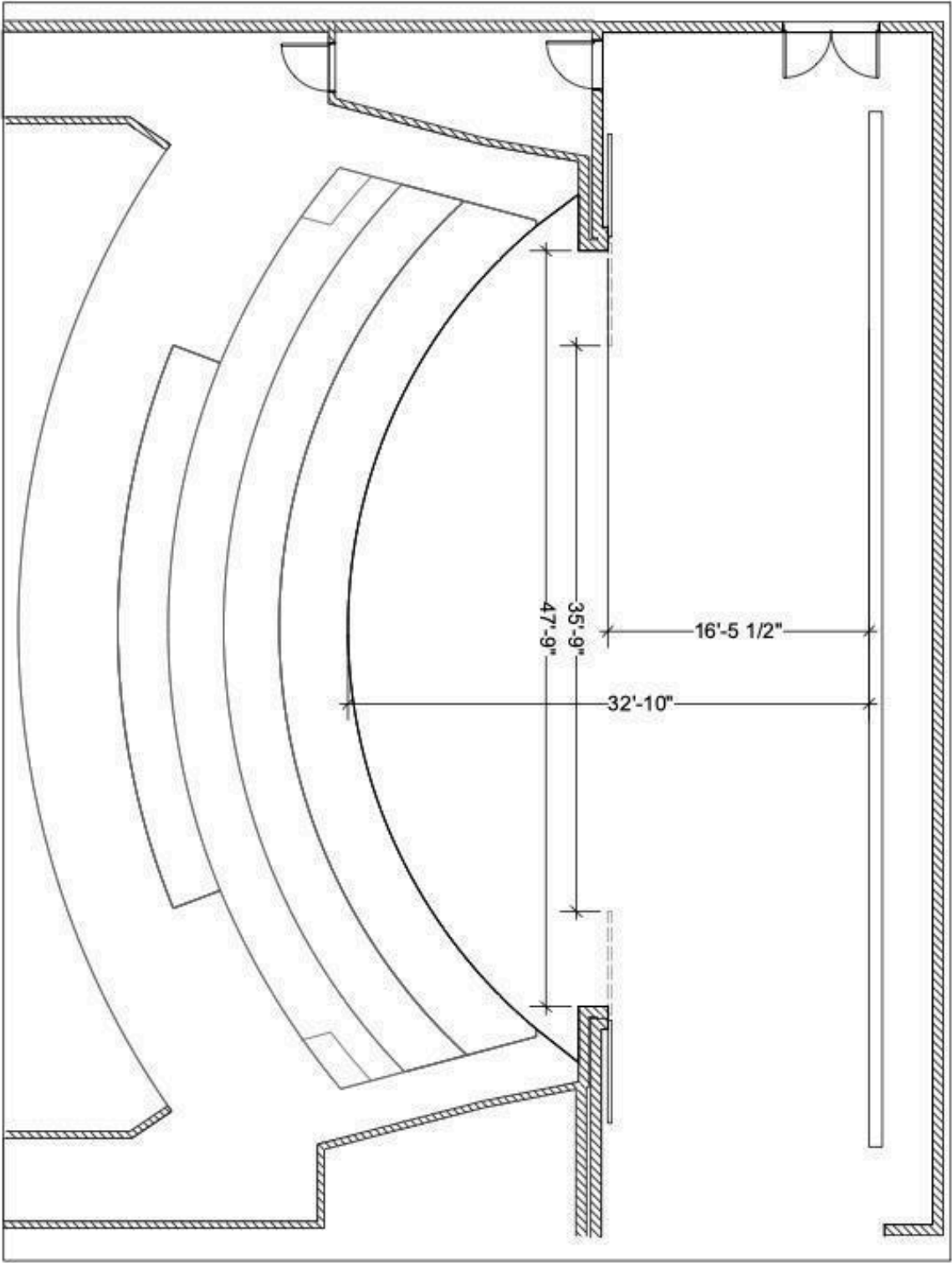


Appendices

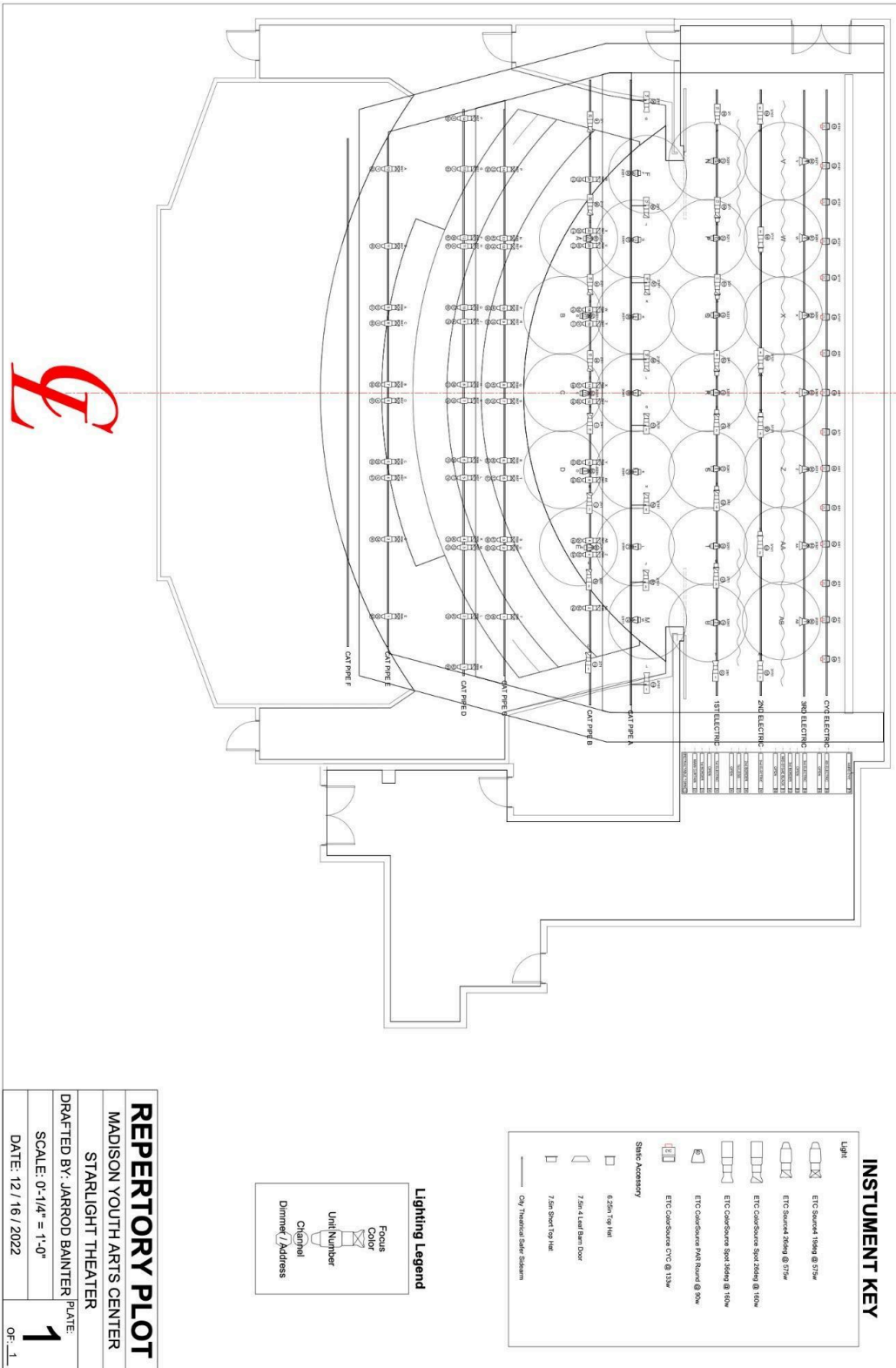
Appendix A: Stage Left Wing Ground plan



Appendix B: Stage Ground Plan



Appendix C: Repertory Lighting Plot



INSTUMENT KEY

- Light
- ETC Source 1000 @ 57W
 - ETC Source 2000 @ 57W
 - ETC Concourse Spot 2000 @ 100W
 - ETC Concourse Spot 1000 @ 100W
 - ETC Concourse PAR Round @ 90W
 - ETC Concourse CVC @ 135W
- Static Accessory
- 6.25m top lift
 - 7.5m 4-Led Beam Tower
 - 7.5m Spot top lift
- On Theatrical show platform

Lighting Legend

- Face
- Color
- Unit Number
- Chisel
- Dimmer / Address

REPERTORY PLOT

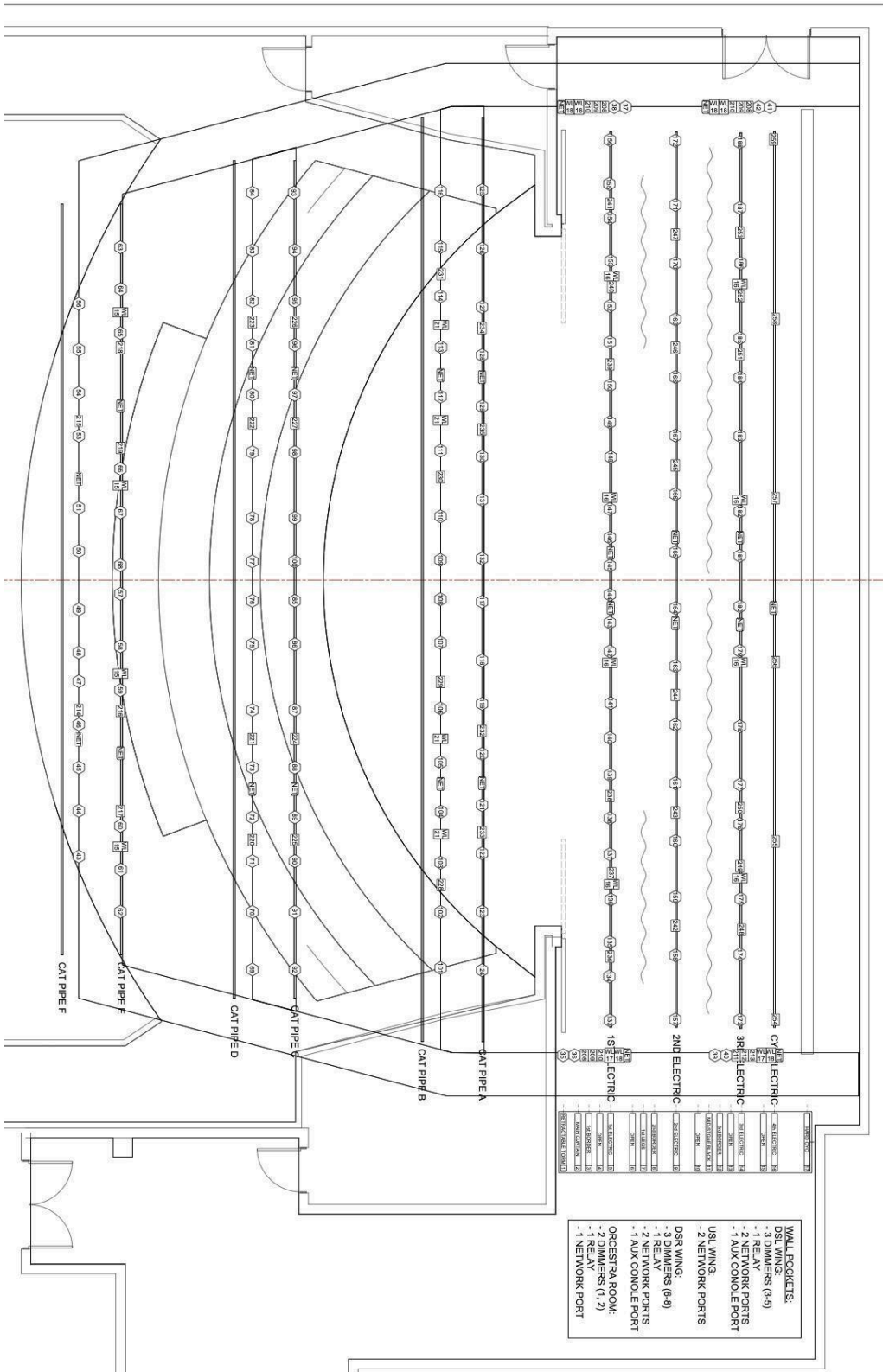
MADISON YOUTH ARTS CENTER
STARLIGHT THEATER

DRAFTED BY: JARROD BANTER PLATE: 1

SCALE: 0'-1/4" = 1'-0"

DATE: 12/16/2022 OF: 1

Appendix D: Dimmer Plot



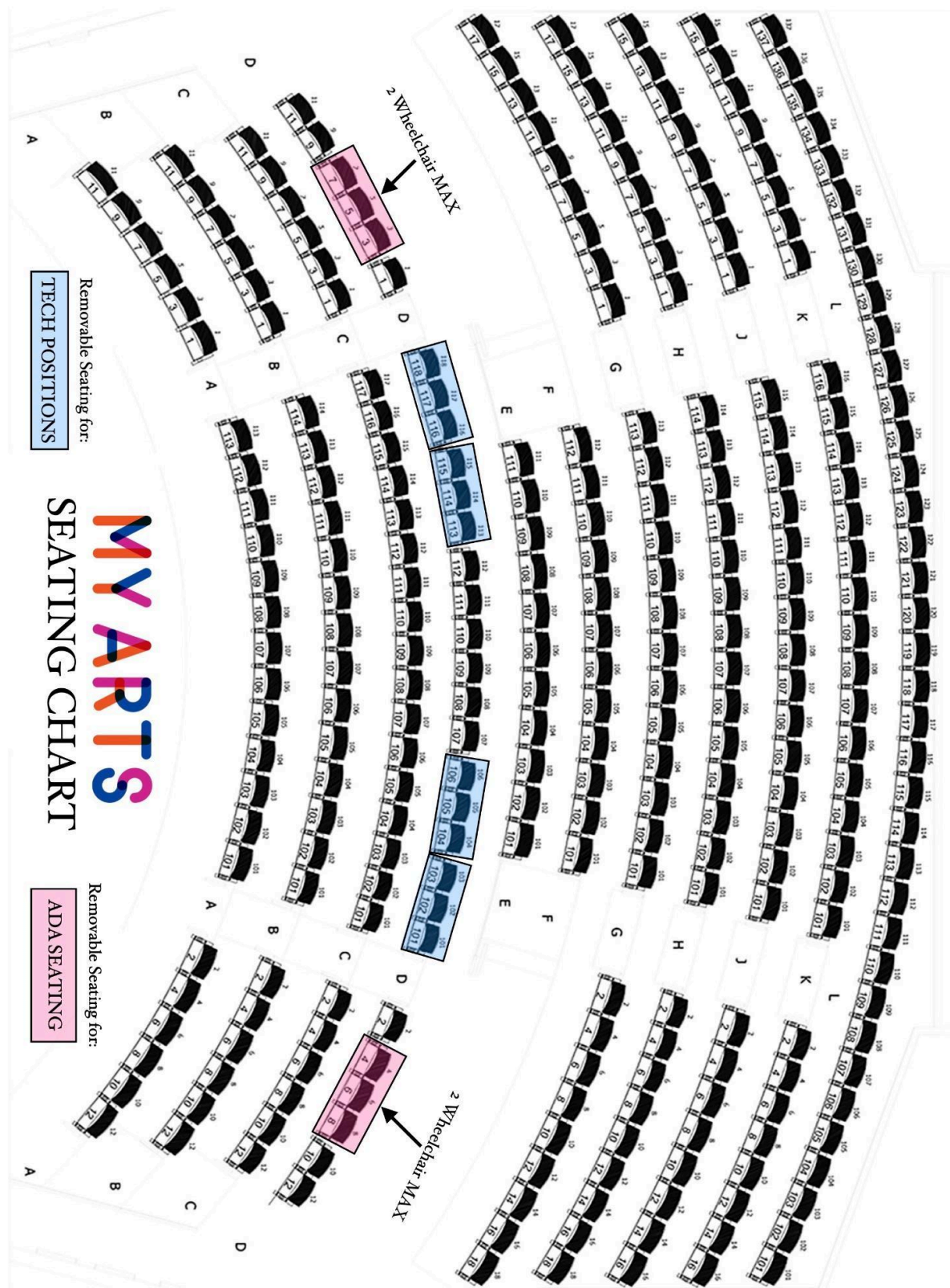
Appendix E: Starlight Theater Lighting Inventory

INSTRUMENT INVENTORY		
ITEM	STARLIGHT PLOT	IN STORAGE
COLORSOURCE SPOT	30	2
COLORSOURCE PAR	26	7
S4 LED LUSTR SERIES 2	0	0
S4 ELIPSOIDAL BODY	52	13
S4 PAR BODY	0	18
COLORSOURCE CYC	15	0
LENS INVENTORY		
ITEM	STARLIGHT PLOT	IN STORAGE
14° ETC SPOT LENS	2	3
19° ETC SPOT LENS	24	3
26° ETC SPOT LENS	50	3
36° ETC SPOT LENS	10	3
50° ETC SPOT LENS	0	3
XWR COLORSOURCE PAR	0	12
WR COLORSOURCE PAR	0	40
MR COLORSOURCE PAR	26	11
NR COLORSOURCE PAR	0	12
WFL S4PAR	0	14
MFL S4PAR	0	32
NSP S4PAR	0	14
VNSP S4PAR	0	14

22Appendix F: Line Set Schedule

Line #	Pipe #	Item	Distance (from Plaster Line)	Pipe Length	Standard Trim	Load Limit	Notes
1		Torm	0' - 0"	62'-0"	N/A	N/A	Dead Hung
2		Main Curtain	1' - 1 ½"	62'-0"	N/A	N/A	Traveler Only
3		1st border	1' - 10 ½"	62'-0"	29' - 0"	2,000 LB	61ft x 10ft
4		Open	2' - 7 ½"	62'-0"	TBD	2,000 LB	
5		1st Electric	3' - 4 ½"	62'-0"	21' - 0"	3,000 LB	
6		Open	4' - 10 ½"	62'-0"	TBD	2,000 LB	
7		1st Legs	5' - 7 ½"	N/A	N/A	N/A	Dead Hung
8		2nd Border	6' - 4 ½"	62'-0"	29' - 0"	2,000 LB	61ft x 10ft
9		2nd Electric	7' - 10 ½"	62'-0"	21' - 0"	3,000 LB	
10		Open	9' - 4 ½"	62'-0"	TBD	2,000 LB	
11		Mid-Stage Black	10' - 1 ½"	62'-0"	N/A	N/A	Traveler Only
12		3rd Border	10' - 10 ½"	62'-0"	29' - 0"	2,000 LB	61ft x 10ft
13		Open	11' - 7 ½"	62'-0"	TBD	2,000 LB	
14		3rd Electric	12' - 4 ½"	62'-0"	21' - 0"	3,000 LB	
15		Open	13' - 10 ½"	62'-0"	TBD	2,000 LB	
16		4th Electric	14' - 7 ½"	62'-0"	23' - 0"	2,000 LB	
17		Cyclorama	16' - 10 ½"	65' - 5"	N/A	N/A	Dead Hung

Appendix G: Starlight Seating Chart



Removable Seating for:
TECH POSITIONS

MY ARTS SEATING CHART

Removable Seating for:
ADA SEATING